



Decide with Confidence
DUNS NO. : 86-917-7745



DS-LOK

INSTRUMENTATION VALVES AND FITTINGS

INTEGRAL BLOCK & BLEED VALVE MONO FLANGE VALVE

- Sizes: 1/2" to 3"
- Pressure Ratings: 150# To 2500#
- Carbon steel LF2, F51, Duplex, Super Duplex, Monel 400, Hastelloy C276, Inconel 625 Titanium, Incolloy 825,



APPLICATION & INSTALLATION

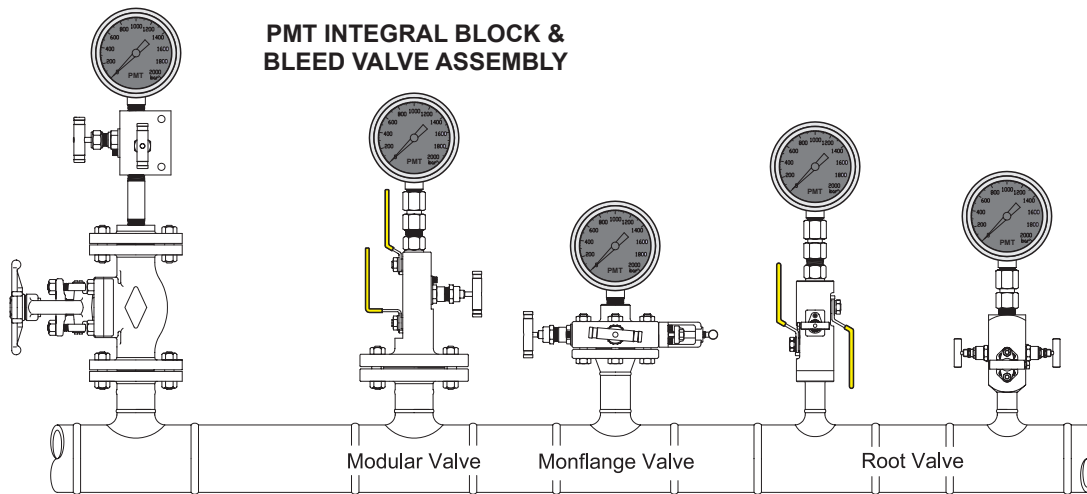
Conventional Installation

- A welded flange, connected to a primary ANSI class isolating valve. The primary valve will be connected to a secondary instrument valve. A pressure gauge or transmitter will then be installed downstream of the instrument valve.

DS-LOK Block & Bleed Valve

- A one-piece integral forging incorporating up 3 ball valve or mixture of ball and needle design.
- Improved safety : leak paths reduced by up to 60%
- Reduced costs : installation and component costs reduced by up to 70%
- Reduced weight : by up to 80%
- Reduced susceptibility to problems caused by vibration.

CONVENTIONAL ASSEMBLY



Modular Valve

Ball and Globe style Needle Valves
Flange and Threaded Connections
Integrally Forged Body

Monoflange Valve

Globe Style Needle Valves
Flanged and Threaded Connections
Slimline Integrally Forged Body

Root Valve

Ball and Globe Style Needle Valves
Weld or Threaded Connections
Direct Connection to the Vessel
Integrally Forged Body

Features

- Bubble tight shut off.
- locking and anti tamper devices for all valve types available option.
- Positive lever stop.
- User preferred handles.
- Permanent affixed reference label.
- Raised face and ring type joint flange styles.
- Optional materials include Super Duplex, Monel, Hastelloy, Inconel.

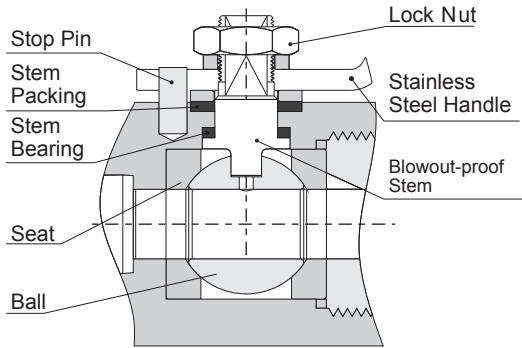
Advantages

- More compact design
- Reduced weight
- Reduced height
- Reduced leakage points
- Reduced effect of system vibration
- Supporting brackets are not required

Application

- Double block and bleed instrument isolation
- Gauge isolation
- Instrument drain
- Chemical injection connection
- Sample connections
- Chemical seal instrument isolation
- Piping / instrument interface
- Direct mounting of instruments
- Remote mounting of instruments

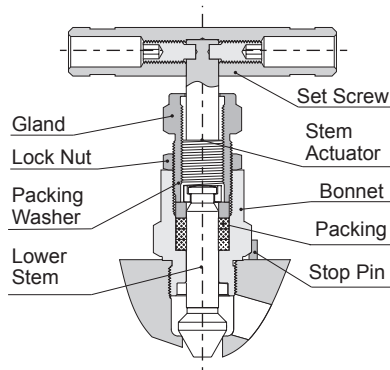
Ball Valve Model



Features

- One piece or two piece body design -minimize leakage paths.
- Ball seat choice of seat materials : PTFE , PEEK
- Fully encapsulated ball seat.
- Superior finished ball for low operating torque.
- Floating ball design providing seat wear compensation.
- Anti static design as standard.
- Blowout proof stem design.
- Optional : handle locking available
- 316 Stainless steel as standard materials.
- Pressure rating up to 10,000 psig (690bar).
- Temperature rating -71°F to 482°F (-57°C to 250°C).

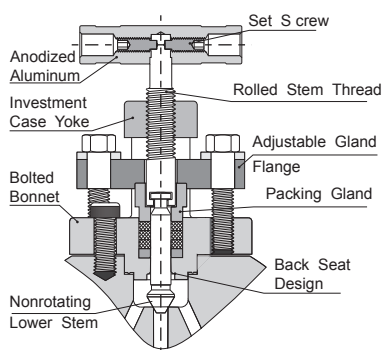
Needle Type Valve Model



Features

- Rolled stem operating threads for low torque operation.
- Gland packing in PTFE or Graphite for bubble tight sealing.
- Close contact dust cap for operating thread protection.
- Back seat design provides secondary stem sealing.
- Stem threads are completely isolated from the process.
- Packing bolt with easy access.
- Lock nut for vibration protection.
- 316 Stainless steel as standard materials.
- Pressure rating up to 10,000 psig (690bar).
- Temperature rating -65°F to 1000°F (-54°C to 538°C).

OS&Y Needle Type Valve Model



Features

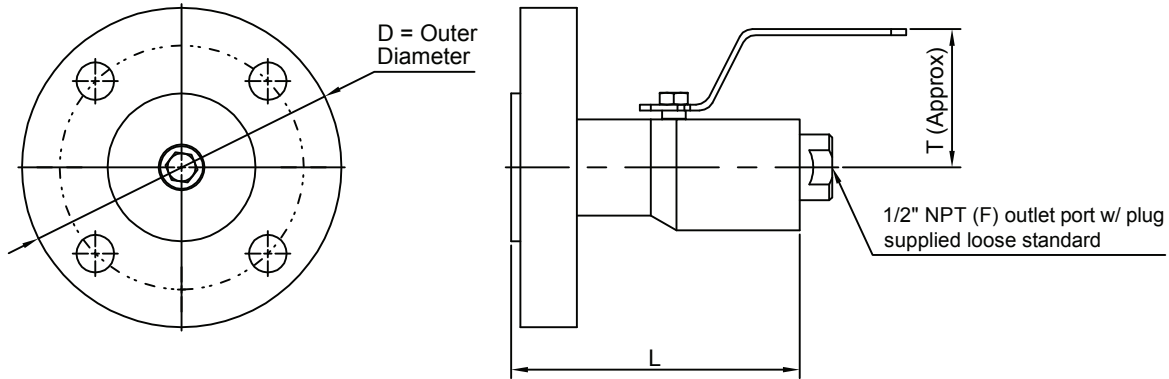
- Externally adjustable gland.
- PTFE or Graphite packing for bubble tight sealing.
- Bonnet seal ensure a bubble tight between body and bonnet.
- Stem threads are completely isolated from the process.
- Yoke of investment casting is precision casted for strength.
- Bolted bonnet for strength.
- 316 Stainless steel as standard materials.
- Pressure rating up to 6,000 psig (413bar).
- Temperature rating -65°F to 1000°F (-54°C to 538°C).

Custom Configurations

DS-LOK process interface valves and process monoflanges can be configured to suit a variety of special applications. In addition to double block and bleed assemblies, single block and block and bleed combinations are available. Block and bleed globe valve module options are also available for all configurations. Contact your authorized DS-LOK sales and service representative for assistance with any special requirements.

BLOCK & BLEED VALVES

10mm Ball Valve - Single Flange



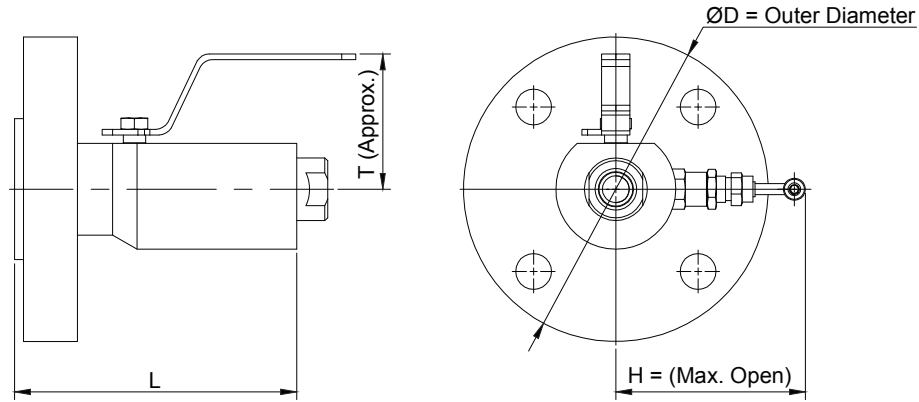
10mm Std Single Block

Unit : Inch

Flange Size	B16.34 Pressure Class	RF Single Flange (10mm)			RTJ Single Flange (10mm)		
		D	T	L	D	T	L
1/2"	150	3.50	2.5	4.1	N/A	N/A	N/A
1/2"	300	3.75	2.5	4.1	3.75	2.5	4.1
1/2"	600	3.75	2.5	4.3	3.75	2.5	4.3
1/2"	900/1500	4.75	2.5	4.7	4.75	2.5	4.7
1/2"	2500	5.25	2.5	5.1	5.25	2.5	5.1
3/4"	150	3.88	2.5	4.1	N/A	N/A	N/A
3/4"	300	4.62	2.5	4.1	4.62	2.5	4.1
3/4"	600	4.62	2.5	4.5	4.62	2.5	4.5
3/4"	900/1500	5.12	2.5	4.9	5.12	2.5	4.9
3/4"	2500	5.50	2.5	5.1	5.50	2.5	5.1
1"	150	4.25	2.5	4.1	4.25	2.5	4.1
1"	300	4.88	2.5	4.1	4.88	2.5	4.1
1"	600	4.88	2.5	4.5	4.88	2.5	4.5
1"	900/1500	5.88	2.5	4.9	5.88	2.5	4.9
1"	2500	6.25	2.5	5.1	6.25	2.5	5.1
1-1/2"	150	5.00	2.5	4.3	5.00	2.5	4.3
1-1/2"	300	6.12	2.5	4.3	6.12	2.5	4.3
1-1/2"	600	6.12	2.5	4.7	6.12	2.5	4.7
1-1/2"	900/1500	7.00	2.5	5.1	7.00	2.5	5.1
1-1/2"	2500	8.00	2.5	5.9	8.00	2.5	5.9
2"	150	6.00	2.5	4.3	6.00	2.5	4.3
2"	300	6.50	2.5	4.5	6.50	2.5	4.5
2"	600	6.50	2.5	4.9	6.50	2.5	4.9
2"	900/1500	8.50	2.5	5.3	8.50	2.5	5.3
2"	2500	9.25	2.5	5.9	9.25	2.5	5.9

BLOCK & BLEED VALVES

10mm Ball Valve and Needle Bleed - Single Flange



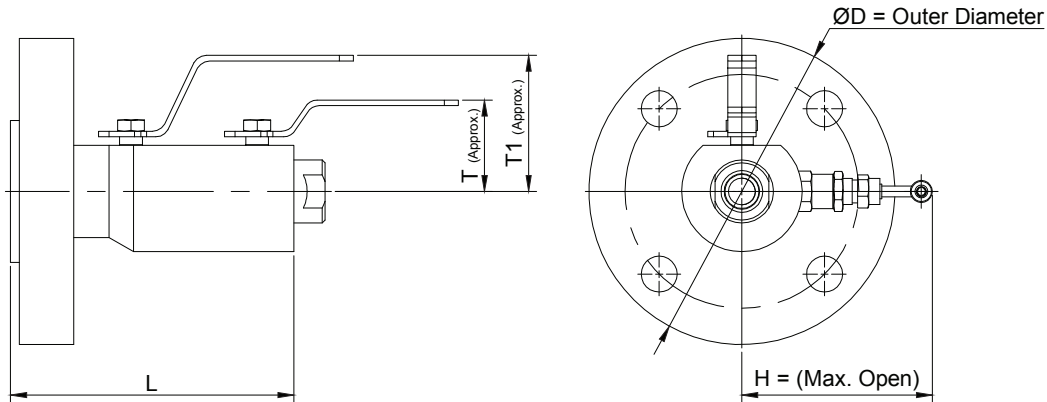
10mm Std Block & Bleed

Unit : Inch

Flange Size	B16.34 Pressure Class	RF Single Flange (10mm)				RTJ Single Flange (10mm)			
		D	H*	T	L	D	H*	T	L
1/2"	150	3.50	4.0	2.8	7.0	N/A	N/A	N/A	N/A
1/2"	300	3.75	4.0	2.8	7.1	3.75	4.0	2.8	7.2
1/2"	600	3.75	4.0	2.8	7.3	3.75	4.0	2.8	7.3
1/2"	900/1500	4.75	4.0	2.8	7.7	4.75	4.0	2.8	7.7
1/2"	2500	5.25	4.0	2.8	8.0	5.25	4.0	2.8	8.0
3/4"	150	3.88	4.0	2.8	7.0	N/A	N/A	N/A	N/A
3/4"	300	4.62	4.0	2.8	7.1	4.62	4.0	2.8	7.3
3/4"	600	4.62	4.0	2.8	7.4	4.62	4.0	2.8	7.4
3/4"	900/1500	5.12	4.0	2.8	7.8	5.12	4.0	2.8	7.8
3/4"	2500	5.50	4.0	2.8	8.0	5.50	4.0	2.8	8.0
1"	150	4.25	4.0	2.8	7.1	4.25	4.0	2.8	7.3
1"	300	4.88	4.0	2.8	7.2	4.88	4.0	2.8	7.4
1"	600	4.88	4.0	2.8	7.5	4.88	4.0	2.8	7.5
1"	900/1500	5.88	4.0	2.8	7.9	5.88	4.0	2.8	7.9
1"	2500	6.25	4.0	2.8	8.2	6.25	4.0	2.8	8.2
1-1/2"	150	5.00	4.0	2.8	7.2	5.00	4.0	2.8	7.4
1-1/2"	300	6.12	4.0	2.8	7.3	6.12	4.0	2.8	7.5
1-1/2"	600	6.12	4.0	2.8	7.7	6.12	4.0	2.8	7.7
1-1/2"	900/1500	7.00	4.0	2.8	8.0	7.00	4.0	2.8	8.0
1-1/2"	2500	8.00	4.0	2.8	8.5	8.00	4.0	2.8	8.6
2"	150	6.00	4.0	2.8	7.3	6.00	4.0	2.8	7.5
2"	300	6.50	4.0	2.8	7.4	6.50	4.0	2.8	7.6
2"	600	6.50	4.0	2.8	7.8	6.50	4.0	2.8	7.8
2"	900/1500	8.50	4.0	2.8	8.3	8.50	4.0	2.8	8.3
2"	2500	9.25	4.0	2.8	8.8	9.25	4.0	2.8	8.8

BLOCK & BLEED VALVES

10mm Double Ball Valve & Needle Bleed - Single Flange



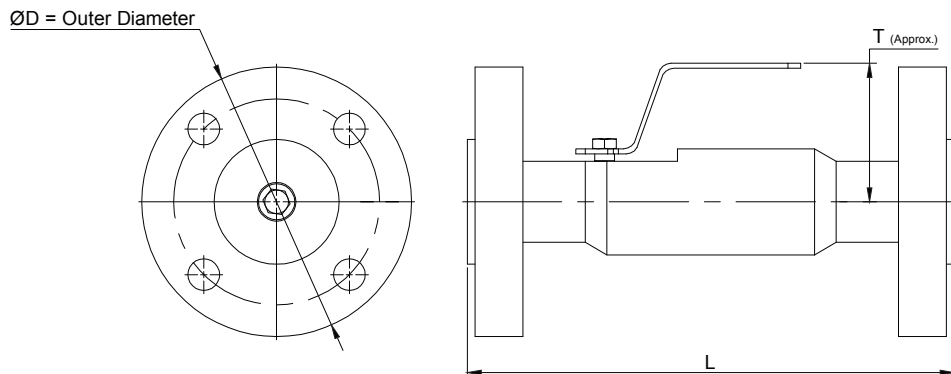
10mm Std Double Block & Bleed

Unit : Inch

ANSI/ Flange Size	B16.34 Pressure Class	RF Single Flange (10mm)					RTJ Single Flange (10mm)				
		D	H*	T	T1	L	D	H*	T	T1	L
1/2"	150	3.50	4.0	2.8	4.3	7.0	N/A	N/A	N/A	N/A	N/A
1/2"	300	3.75	4.0	2.8	4.3	7.1	3.75	4.0	2.8	4.3	7.2
1/2"	600	3.75	4.0	2.8	4.3	7.3	3.75	4.0	2.8	4.3	7.3
1/2"	900/1500	4.75	4.0	2.8	4.3	7.7	4.75	4.0	2.8	4.3	7.7
1/2"	2500	5.25	4.0	2.8	4.3	8.0	5.25	4.0	2.8	4.3	8.0
3/4"	150	3.88	4.0	2.8	4.3	7.0	N/A	N/A	N/A	N/A	N/A
3/4"	300	4.62	4.0	2.8	4.3	7.1	4.62	4.0	2.8	4.3	7.3
3/4"	600	4.62	4.0	2.8	4.3	7.4	4.62	4.0	2.8	4.3	7.4
3/4"	900/1500	5.12	4.0	2.8	4.3	7.8	5.12	4.0	2.8	4.3	7.8
3/4"	2500	5.50	4.0	2.8	4.3	8.0	5.50	4.0	2.8	4.3	8.0
1"	150	4.25	4.0	2.8	4.3	7.1	4.25	4.0	2.8	4.3	7.3
1"	300	4.88	4.0	2.8	4.3	7.2	4.88	4.0	2.8	4.3	7.4
1"	600	4.88	4.0	2.8	4.3	7.5	4.88	4.0	2.8	4.3	7.5
1"	900/1500	5.88	4.0	2.8	4.3	7.9	5.88	4.0	2.8	4.3	7.9
1"	2500	6.25	4.0	2.8	4.3	8.2	6.25	4.0	2.8	4.3	8.2
1-1/2"	150	5.00	4.0	2.8	4.3	7.2	5.00	4.0	2.8	4.3	7.4
1-1/2"	300	6.12	4.0	2.8	4.3	7.3	6.12	4.0	2.8	4.3	7.5
1-1/2"	600	6.12	4.0	2.8	4.3	7.7	6.12	4.0	2.8	4.3	7.7
1-1/2"	900/1500	7.00	4.0	2.8	4.3	8.0	7.00	4.0	2.8	4.3	8.0
1-1/2"	2500	8.00	4.0	2.8	4.3	8.5	8.00	4.0	2.8	4.3	8.6
2"	150	6.00	4.0	2.8	4.3	7.3	6.00	4.0	2.8	4.3	7.5
2"	300	6.50	4.0	2.8	4.3	7.4	6.50	4.0	2.8	4.3	7.6
2"	600	6.50	4.0	2.8	4.3	7.8	6.50	4.0	2.8	4.3	7.8
2"	900/1500	8.50	4.0	2.8	4.3	8.3	8.50	4.0	2.8	4.3	8.3
2"	2500	9.25	4.0	2.8	4.3	8.8	9.25	4.0	2.8	4.3	8.8

BLOCK & BLEED VALVES

10mm Ball Valve - Double Flange



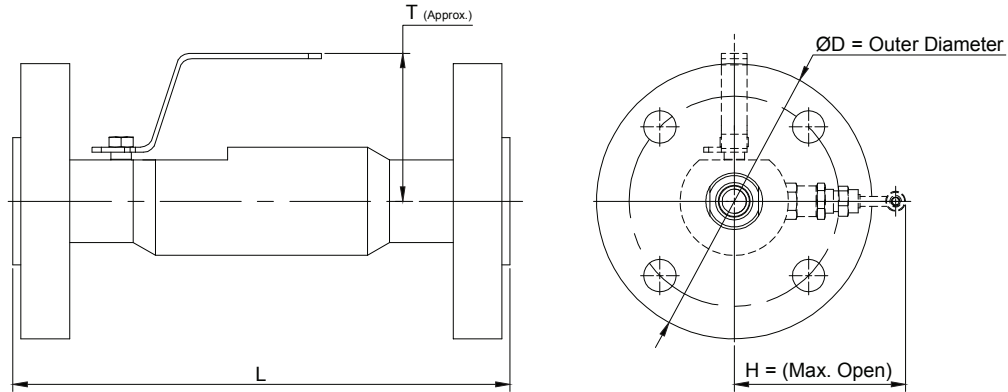
10mm Std Single Block

Unit : Inch

Flange Size	B16.34 Pressure Class	RF Double Flange (10mm)			RTJ Double Flange (10mm)		
		D	T	L	D	T	L
1/2"	150	3.50	4.3	8.5	NA	NA	NA
1/2"	300	3.75	4.3	8.7	3.75	4.3	9.1
1/2"	600	3.75	4.3	9.2	3.75	4.3	9.2
1/2"	900/1500	4.75	4.3	9.9	4.75	4.3	9.9
1/2"	2500	5.25	4.3	10.5	5.25	4.3	10.5
3/4"	150	3.88	4.3	8.6	NA	NA	NA
3/4"	300	4.62	4.3	8.9	4.62	4.3	9.2
3/4"	600	4.62	4.3	9.4	4.62	4.3	9.4
3/4"	900/1500	5.12	4.3	10.1	5.12	4.3	10.1
3/4"	2500	5.50	4.3	10.6	5.50	4.3	10.6
1"	150	4.25	4.3	8.7	4.25	4.3	9.1
1"	300	4.88	4.3	9.0	4.88	4.3	9.4
1"	600	4.88	4.3	9.5	4.88	4.3	9.5
1"	900/1500	5.88	4.3	10.4	5.88	4.3	10.4
1"	2500	6.25	4.3	10.9	6.25	4.3	10.9
1-1/2"	150	5.00	4.3	9.0	5.00	4.3	9.4
1-1/2"	300	6.12	4.3	9.2	6.12	4.3	9.6
1-1/2"	600	6.12	4.3	9.9	6.12	4.3	9.9
1-1/2"	900/1500	7.00	4.3	10.6	7.00	4.3	10.6
1-1/2"	2500	8.00	4.3	11.6	8.00	4.3	11.7
2"	150	6.00	4.3	9.1	6.00	4.3	9.5
2"	300	6.50	4.3	9.4	6.50	4.3	9.9
2"	600	6.50	4.3	10.1	6.50	4.3	10.2
2"	900/1500	8.50	4.3	11.1	8.50	4.3	11.2
2"	2500	9.25	4.3	12.1	9.25	4.3	12.2

BLOCK & BLEED VALVES

10mm Ball Valve - Double Flange



10mm Std Block & Bleed

Unit : Inch

Flange Size	B16.34 Pressure Class	RF Double Flange (10mm)				RTJ Double Flange (10mm)			
		D	H*	T	L	D	H*	T	L
1/2"	150	3.50	4.0	4.3	8.5	N/A	N/A	N/A	NA
1/2"	300	3.75	4.0	4.3	8.7	3.75	4.0	4.3	9.1
1/2"	600	3.75	4.0	4.3	9.2	3.75	4.0	4.3	9.2
1/2"	900/1500	4.75	4.0	4.3	9.9	4.75	4.0	4.3	9.9
1/2"	2500	5.25	4.0	4.3	10.5	5.25	4.0	4.3	10.5
3/4"	150	3.88	4.0	4.3	8.6	N/A	N/A	N/A	NA
3/4"	300	4.62	4.0	4.3	8.9	4.62	4.0	4.3	9.2
3/4"	600	4.62	4.0	4.3	9.4	4.62	4.0	4.3	9.4
3/4"	900/1500	5.12	4.0	4.3	10.1	5.12	4.0	4.3	10.1
3/4"	2500	5.50	4.0	4.3	10.6	5.50	4.0	4.3	10.6
1"	150	4.25	4.0	4.3	8.7	4.25	4.0	4.3	9.1
1"	300	4.88	4.0	4.3	9.0	4.88	4.0	4.3	9.4
1"	600	4.88	4.0	4.3	9.5	4.88	4.0	4.3	9.5
1"	900/1500	5.88	4.0	4.3	10.4	5.88	4.0	4.3	10.4
1"	2500	6.25	4.0	4.3	10.9	6.25	4.0	4.3	10.9
1-1/2"	150	5.00	4.0	4.3	9.0	5.00	4.0	4.3	9.4
1-1/2"	300	6.12	4.0	4.3	9.2	6.12	4.0	4.3	9.6
1-1/2"	600	6.12	4.0	4.3	9.9	6.12	4.0	4.3	9.9
1-1/2"	900/1500	7.00	4.0	4.3	10.6	7.00	4.0	4.3	10.6
1-1/2"	2500	8.00	4.0	4.3	11.6	8.00	4.0	4.3	11.7
2"	150	6.00	4.0	4.3	9.1	6.00	4.0	4.3	9.5
2"	300	6.50	4.0	4.3	9.4	6.50	4.0	4.3	9.9
2"	600	6.50	4.0	4.3	10.1	6.50	4.0	4.3	10.2
2"	900/1500	8.50	4.0	4.3	11.1	8.50	4.0	4.3	11.2
2"	2500	9.25	4.0	4.3	12.1	9.25	4.0	4.3	12.2

Monoflange valve

DS-LOK Monoflange

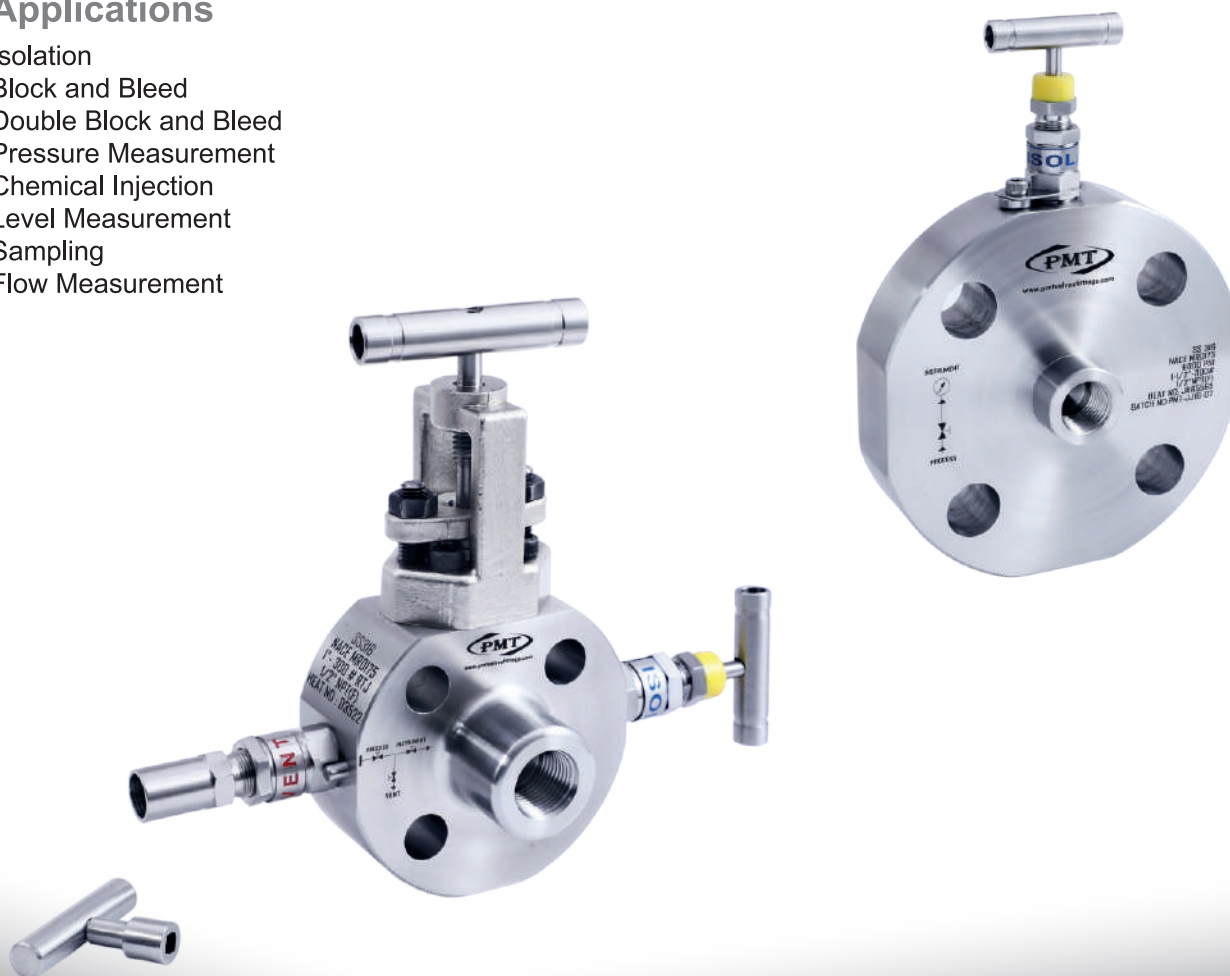
- Improved safety : leak paths reduced by up to 60%, less susceptibility to vibration
- Reduced costs : installation and component costs saving up to 80%
- Reduced weight : up to 85%

Features

- Combined needle and OS & Y valves available.
- Raised face and ring type joint flange styles.
- One-piece forged construction flange as standard.
- Locking and anti tamper devices for all valve types available. (as option)
- Standard materials of Stainless steel ASTM A182 F316/F316L, Carbon steel ASTM
- Optional materials include Super Duplex, Monel, Hastelloy, Inconel.

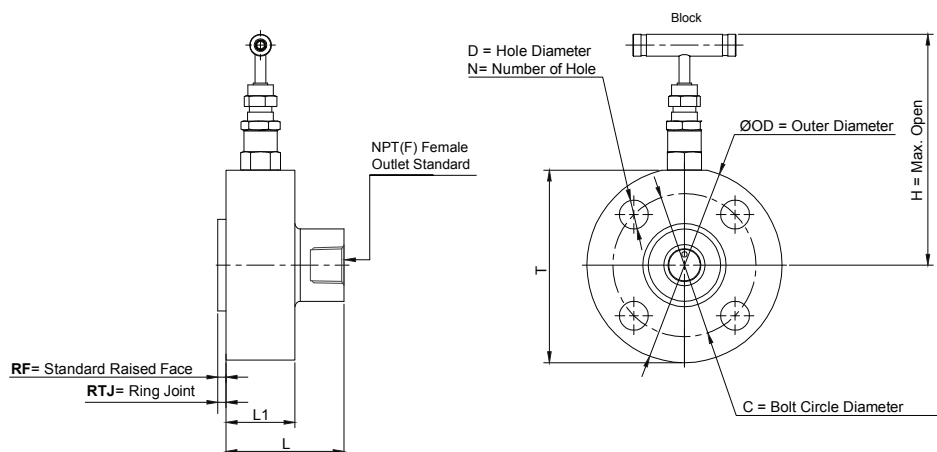
Applications

- Isolation
- Block and Bleed
- Double Block and Bleed
- Pressure Measurement
- Chemical Injection
- Level Measurement
- Sampling
- Flow Measurement



Single Block Needle Type

MONOFLANGE VALVE Single Block Needle Type

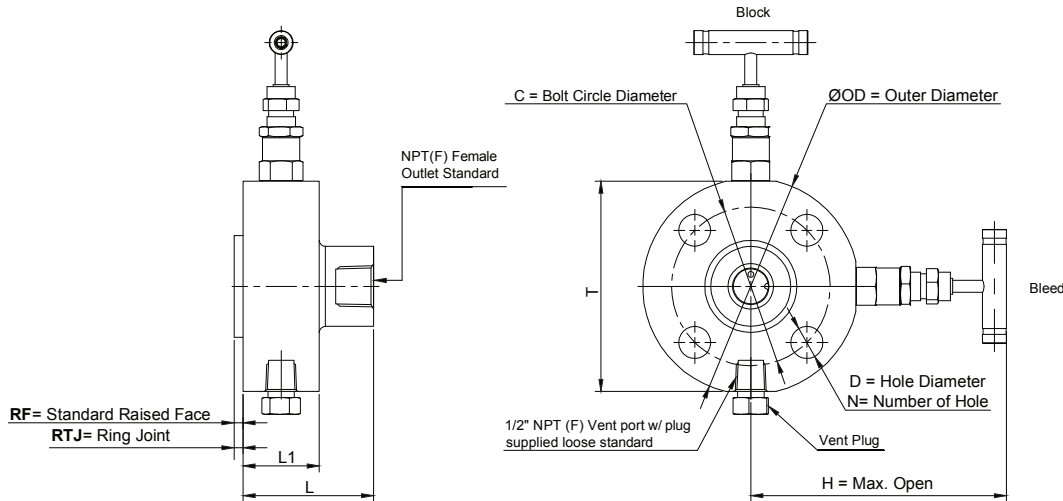


Standard Screwed Bonnet Dimensions (inches)

Size	Class	RF	R	OD	L	L1	C	N	D	H	T
1/2"	150	0.06	N/A	3.50	2.44	1.50	2.38	4	5/8	4.50	3.40
	300	0.06	0.219	3.75	2.63	1.50	2.62	4	5/8	4.63	3.65
	600	0.25	0.219	3.75	2.63	1.50	2.62	4	5/8	4.63	3.65
	900/1500	0.25	0.250	4.75	2.63	1.50	3.25	4	7/8	5.13	4.65
	2500	0.25	0.250	5.25	2.63	1.50	3.50	4	7/8	5.38	5.15
3/4"	150	0.06	N/A	3.88	2.63	1.50	2.75	4	5/8	4.75	3.78
	300	0.06	0.250	4.62	2.63	1.50	3.25	4	3/4	5.06	4.52
	600	0.25	0.250	4.62	2.63	1.50	3.25	4	3/4	5.06	4.52
	900/1500	0.25	0.250	5.12	2.63	1.50	3.50	4	7/8	5.31	5.02
	2500	0.25	0.250	5.50	2.63	1.50	3.75	4	7/8	5.50	5.40
1"	150	0.06	0.250	4.25	2.63	1.50	3.12	4	5/8	4.88	4.15
	300	0.06	0.250	4.88	2.63	1.50	3.50	4	3/4	5.19	4.78
	600	0.25	0.250	4.88	2.63	1.50	3.50	4	3/4	5.19	4.78
	900/1500	0.25	0.250	5.88	2.63	1.50	3.50	4	1	5.88	5.78
	2500	0.25	0.250	6.25	2.63	1.50	4.25	4	1	5.88	6.15
1-1/2"	150	0.06	0.250	5.00	2.63	1.50	3.88	4	5/8	5.25	4.90
	300	0.06	0.250	6.12	2.63	1.50	4.50	4	7/8	5.88	6.02
	600	0.25	0.250	6.12	2.63	1.50	4.50	4	7/8	5.88	6.02
	900/1500	0.25	0.250	7.00	2.63	1.50	4.88	4	1-1/8	6.25	6.90
	2500	0.25	0.312	8.00	2.63	1.75	5.75	4	1-1/4	6.75	7.90
2"	150	0.06	0.250	6.00	2.63	1.50	4.75	4	3/4	5.75	5.90
	300	0.06	0.312	6.50	2.63	1.50	5.00	8	3/4	6.00	6.40
	600	0.25	0.312	6.50	2.63	1.50	5.00	8	3/4	6.00	6.40
	900/1500	0.25	0.312	8.50	2.63	1.50	6.50	8	1	7.00	8.40
	2500	0.25	0.312	9.25	3.13	2.00	6.75	8	1-1/8	7.38	9.15

MONOFLANGE VALVE

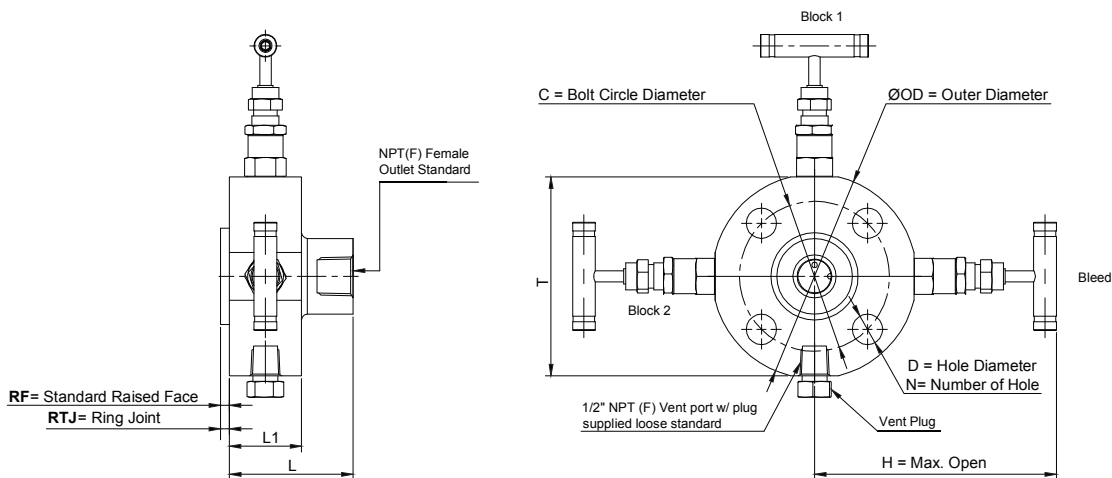
Block & Bleed Needle Type



Standard Screwed Bonnet Dimensions (inches)											
Size	Class	RF	RTJ	OD	L	L1	C	N	D	T	H
1/2"	150	0.06	N/A	3.50	2.44	1.50	2.38	4	5/8	3.40	4.50
	300	0.06	0.219	3.75	2.63	1.50	2.62	4	5/8	3.65	4.63
	600	0.25	0.219	3.75	2.63	1.50	2.62	4	5/8	3.65	4.63
	900/1500	0.25	0.250	4.75	2.63	1.50	3.25	4	7/8	4.65	5.13
	2500	0.25	0.250	5.25	2.63	1.50	3.50	4	7/8	5.15	5.38
3/4"	150	0.06	N/A	3.88	2.63	1.50	2.75	4	5/8	3.78	4.75
	300	0.06	0.250	4.62	2.63	1.50	3.25	4	3/4	4.52	5.06
	600	0.25	0.250	4.62	2.63	1.50	3.25	4	3/4	4.52	5.06
	900/1500	0.25	0.250	5.12	2.63	1.50	3.50	4	7/8	5.02	5.31
	2500	0.25	0.250	5.50	2.63	1.50	3.75	4	7/8	5.40	5.50
1"	150	0.06	0.250	4.25	2.63	1.50	3.12	4	5/8	4.15	4.88
	300	0.06	0.250	4.88	2.63	1.50	3.50	4	3/4	4.78	5.19
	600	0.25	0.250	4.88	2.63	1.50	3.50	4	3/4	4.78	5.19
	900/1500	0.25	0.250	5.88	2.63	1.50	4.00	4	1	5.78	5.88
	2500	0.25	0.250	6.25	2.63	1.50	4.25	4	1	6.15	5.88
1-1/2"	150	0.06	0.250	5.00	2.63	1.50	3.88	4	5/8	4.90	5.25
	300	0.06	0.250	6.12	2.63	1.50	4.50	4	7/8	6.02	5.88
	600	0.25	0.250	6.12	2.63	1.50	4.50	4	7/8	6.02	5.88
	900/1500	0.25	0.250	7.00	2.63	1.50	4.88	4	1-1/8	6.90	6.25
	2500	0.25	0.312	8.00	2.63	1.50	5.75	4	1-1/4	7.90	6.75
2"	150	0.06	0.250	6.00	2.63	1.50	4.75	4	3/4	5.90	5.75
	300	0.06	0.312	6.50	2.63	1.50	5.00	8	3/4	6.40	6.00
	600	0.25	0.312	6.50	2.63	1.50	5.00	8	3/4	6.40	6.00
	900/1500	0.25	0.312	8.50	2.63	1.50	6.50	8	1	8.40	7.00
	2500	0.25	0.312	9.25	3.13	2.00	6.75	8	1-1/8	9.15	7.38

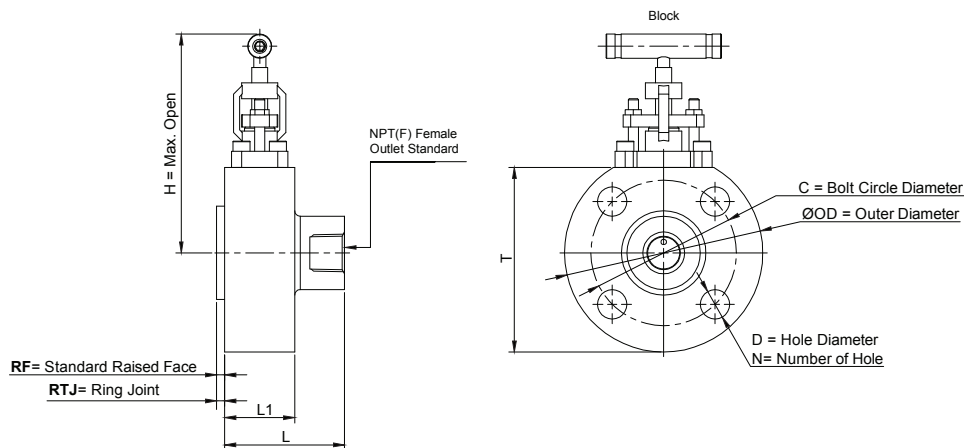
MONOFLANGE VALVE

Double Block & Bleed Needle Type



Standard Screwed Bonnet Dimensions (inches)											
Size	Class	RF	RTJ	OD	L	L1	C	N	D	H	T
1/2"	150	0.06	N/A	3.50	2.44	1.50	2.38	4	5/8	4.50	3.40
	300	0.06	0.219	3.75	2.63	1.50	2.62	4	5/8	4.63	3.65
	600	0.25	0.219	3.75	2.63	1.50	2.62	4	5/8	4.63	3.65
	900/1500	0.25	0.250	4.75	2.63	1.50	3.25	4	7/8	5.13	4.65
	2500	0.25	0.250	5.25	2.63	1.50	3.50	4	7/8	5.38	5.15
3/4"	150	0.06	N/A	3.88	2.63	1.50	2.75	4	5/8	4.75	3.78
	300	0.06	0.250	4.62	2.63	1.50	3.25	4	3/4	5.06	4.52
	600	0.25	0.250	4.62	2.63	1.50	3.25	4	3/4	5.06	4.52
	900/1500	0.25	0.250	5.12	2.63	1.50	3.50	4	7/8	5.31	5.02
	2500	0.25	0.250	5.50	2.63	1.50	3.75	4	7/8	5.50	5.40
1"	150	0.06	0.250	4.25	2.63	1.50	3.12	4	5/8	4.88	4.15
	300	0.06	0.250	4.88	2.63	1.50	3.50	4	3/4	5.19	4.78
	600	0.25	0.250	4.88	2.63	1.50	3.50	4	3/4	5.19	4.78
	900/1500	0.25	0.250	5.88	2.63	1.50	4.00	4	1	5.88	5.78
	2500	0.25	0.250	6.25	2.63	1.50	4.25	4	1	5.88	6.15
1-1/2"	150	0.06	0.250	5.00	2.63	1.50	3.88	4	5/8	5.25	4.90
	300	0.06	0.250	6.12	2.63	1.50	4.50	4	7/8	5.88	6.02
	600	0.25	0.250	6.12	2.63	1.50	4.50	4	7/8	5.88	6.02
	900/1500	0.25	0.250	7.00	2.63	1.50	4.88	4	1-1/8	6.25	6.90
	2500	0.25	0.312	8.00	2.63	1.50	5.75	4	1-1/4	6.75	7.90
2"	150	0.06	0.250	6.00	2.63	1.50	4.75	4	3/4	5.75	5.90
	300	0.06	0.312	6.50	2.63	1.50	5.00	8	3/4	6.00	6.40
	600	0.25	0.312	6.50	2.63	1.50	5.00	8	3/4	6.00	6.40
	900/1500	0.25	0.312	8.50	2.63	1.50	6.50	8	1	7.00	8.40
	2500	0.25	0.312	9.25	3.13	2.00	6.75	8	1-1/8	7.38	9.15

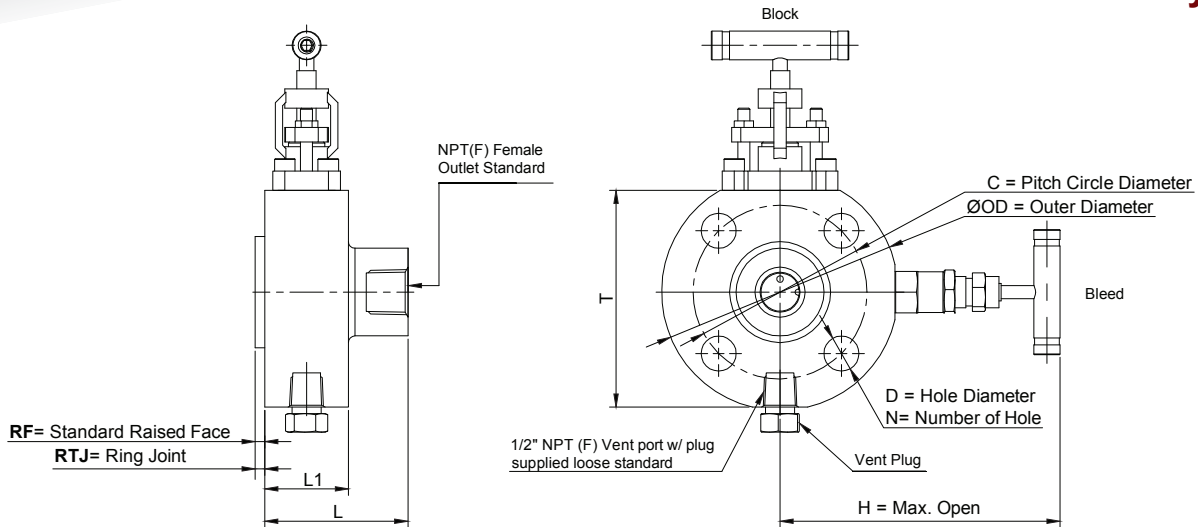
MONOFLANGE VALVE Single Block OS & Y Type



OS&Y Bonnet Dimensions (inches)											
Size	Class	RF	RTJ	OD	L	L1	C	N	D	T	H
1/2"	150	0.06	N/A	3.50	2.44	1.50	2.38	4	5/8	3.40	5.50
	300	0.06	0.219	3.75	2.63	1.50	2.62	4	5/8	3.65	5.63
	600	0.25	0.219	3.75	2.63	1.50	2.62	4	5/8	3.65	5.63
	900/1500	0.25	0.250	4.75	2.63	1.50	3.25	4	7/8	4.65	6.13
	2500	0.25	0.250	5.25	2.63	1.50	3.50	4	7/8	5.15	6.38
3/4"	150	0.06	N/A	3.88	2.63	1.50	2.75	4	5/8	3.78	5.75
	300	0.06	0.250	4.62	2.63	1.50	3.25	4	3/4	4.52	6.06
	600	0.25	0.250	4.62	2.63	1.50	3.25	4	3/4	4.52	6.06
	900/1500	0.25	0.250	5.12	2.63	1.50	3.50	4	7/8	5.02	6.31
	2500	0.25	0.250	5.50	2.63	1.50	3.75	4	7/8	5.40	6.50
1"	150	0.06	0.250	4.25	2.63	1.50	3.12	4	5/8	4.15	5.88
	300	0.06	0.250	4.88	2.63	1.50	3.50	4	3/4	4.78	6.19
	600	0.25	0.250	4.88	2.63	1.50	3.50	4	3/4	4.78	6.19
	900/1500	0.25	0.250	5.88	2.63	1.50	4.00	4	1	5.78	6.88
	2500	0.25	0.250	6.25	2.63	1.50	4.25	4	1	6.15	6.88
1-1/2"	150	0.06	0.250	5.00	2.63	1.50	3.88	4	5/8	4.90	6.25
	300	0.06	0.250	6.12	2.63	1.50	4.50	4	7/8	6.02	6.88
	600	0.25	0.250	6.12	2.63	1.50	4.50	4	7/8	6.02	6.88
	900/1500	0.25	0.250	7.00	2.63	1.50	4.88	4	1-1/8	6.90	7.25
	2500	0.25	0.312	8.00	2.69	1.50	5.75	4	1-1/4	7.90	7.25
2"	150	0.06	0.250	6.00	2.63	1.50	4.75	4	3/4	5.90	6.75
	300	0.06	0.312	6.50	2.63	1.50	5.00	8	3/4	6.40	7.00
	600	0.25	0.312	6.50	2.63	1.50	5.00	8	3/4	6.40	7.00
	900/1500	0.25	0.312	8.50	2.63	1.50	6.50	8	1	8.40	8.00
	2500	0.25	0.312	9.25	3.13	2.00	6.75	8	1-1/8	9.15	8.38

MONOFLANGE VALVE

Block & Bleed OS & Y Type

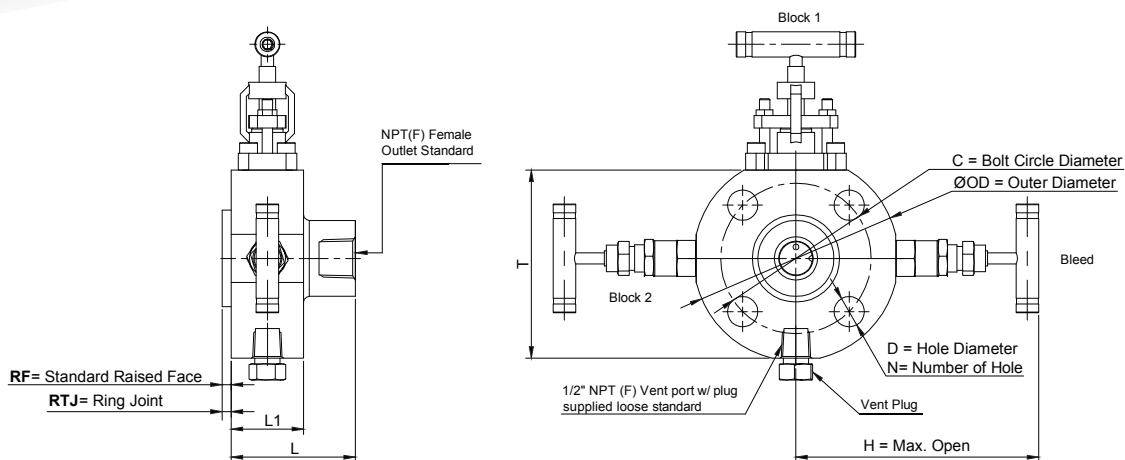


OS&Y Bonnet Dimensions (inches)

Size	Class	RF	RTJ	OD	L	L1	C	N	D	T	H
1/2"	150	0.06	N/A	3.50	2.44	1.50	2.38	4	5/8	3.40	5.50
	300	0.06	0.219	3.75	2.63	1.50	2.62	4	5/8	3.65	5.63
	600	0.25	0.219	3.75	2.63	1.50	2.62	4	5/8	3.65	5.63
	900/1500	0.25	0.250	4.75	2.63	1.50	3.25	4	7/8	4.65	6.13
	2500	0.25	0.250	5.25	2.63	1.50	3.50	4	7/8	5.15	6.38
3/4"	150	0.06	N/A	3.88	2.63	1.50	2.75	4	5/8	3.78	5.75
	300	0.06	0.250	4.62	2.63	1.50	3.25	4	3/4	4.52	6.06
	600	0.25	0.250	4.62	2.63	1.50	3.25	4	3/4	4.52	6.06
	900/1500	0.25	0.250	5.12	2.63	1.50	3.50	4	7/8	5.02	6.31
	2500	0.25	0.250	5.50	2.63	1.50	3.75	4	7/8	5.40	6.50
1"	150	0.06	0.250	4.25	2.63	1.50	3.12	4	5/8	4.15	5.88
	300	0.06	0.250	4.88	2.63	1.50	3.50	4	3/4	4.78	6.19
	600	0.25	0.250	4.88	2.63	1.50	3.50	4	3/4	4.78	6.19
	900/1500	0.25	0.250	5.88	2.63	1.50	4.00	4	1	5.78	6.88
	2500	0.25	0.250	6.25	2.63	1.50	4.25	4	1	6.15	6.88
1-1/2"	150	0.06	0.250	5.00	2.63	1.50	3.88	4	5/8	4.90	6.25
	300	0.06	0.250	6.12	2.63	1.50	4.50	4	7/8	6.02	6.88
	600	0.25	0.250	6.12	2.63	1.50	4.50	4	7/8	6.02	6.88
	900/1500	0.25	0.250	7.00	2.63	1.50	4.88	4	1-1/8	6.90	7.25
	2500	0.25	0.312	8.00	2.63	1.50	5.75	4	1-1/4	7.90	7.25
2"	150	0.06	0.250	6.00	2.63	1.50	4.75	4	3/4	5.90	6.75
	300	0.06	0.312	6.50	2.63	1.50	5.00	8	3/4	6.40	7.00
	600	0.25	0.312	6.50	2.63	1.50	5.00	8	3/4	6.40	7.00
	900/1500	0.25	0.312	8.50	2.63	1.50	6.50	8	1	8.40	8.00
	2500	0.25	0.312	9.25	3.13	2.00	6.75	8	1-1/8	9.15	8.38

MONOFLANGE VALVE

Double Block & Bleed OS & Y Type



OS&Y Bonnet Dimensions (inches)											
Size	Class	RF	RTJ	OD	L	L1	C	N	D	T	H
1/2"	150	0.06	N/A	3.50	2.44	1.50	2.38	4	5/8	3.40	5.50
	300	0.06	0.219	3.75	2.63	1.50	2.62	4	5/8	3.65	5.63
	600	0.25	0.219	3.75	2.63	1.50	2.62	4	5/8	3.65	5.63
	900/1500	0.25	0.250	4.75	2.63	1.50	3.25	4	7/8	4.65	6.13
	2500	0.25	0.250	5.25	2.63	1.50	3.50	4	7/8	5.15	6.38
3/4"	150	0.06	N/A	3.88	2.63	1.50	2.75	4	5/8	3.78	5.75
	300	0.06	0.250	4.62	2.63	1.50	3.25	4	3/4	4.52	6.06
	600	0.25	0.250	4.62	2.63	1.50	3.25	4	3/4	4.52	6.06
	900/1500	0.25	0.250	5.12	2.63	1.50	3.50	4	7/8	5.02	6.31
	2500	0.25	0.250	5.50	2.63	1.50	3.75	4	7/8	5.40	6.50
1"	150	0.06	0.250	4.25	2.63	1.50	3.12	4	5/8	4.15	5.88
	300	0.06	0.250	4.88	2.63	1.50	3.50	4	3/4	4.78	6.19
	600	0.25	0.250	4.88	2.63	1.50	3.50	4	3/4	4.78	6.19
	900/1500	0.25	0.250	5.88	2.63	1.50	4.00	4	1	5.78	6.88
	2500	0.25	0.250	6.25	2.63	1.50	4.25	4	1	6.15	6.88
1-1/2"	150	0.06	0.250	5.00	2.63	1.50	3.88	4	5/8	4.90	6.25
	300	0.06	0.250	6.12	2.63	1.50	4.50	4	7/8	6.02	6.88
	600	0.25	0.250	6.12	2.63	1.50	4.50	4	7/8	6.02	6.88
	900/1500	0.25	0.250	7.00	2.63	1.50	4.88	4	1-1/8	6.90	7.25
	2500	0.25	0.312	8.00	2.63	1.50	5.75	4	1-1/4	7.90	7.25
2"	150	0.06	0.250	6.00	2.63	1.50	4.75	4	3/4	5.90	6.75
	300	0.06	0.312	6.50	2.63	1.50	5.00	8	3/4	6.40	7.00
	600	0.25	0.312	6.50	2.63	1.50	5.00	8	3/4	6.40	7.00
	900/1500	0.25	0.312	8.50	2.63	1.50	6.50	8	1	8.40	8.00
	2500	0.25	0.312	9.25	3.13	2.00	6.75	8	1-1/8	9.15	8.38



DS-LOK

INSTRUMENTATION VALVES AND FITTINGS



Valves

- Needle Valves
- Manifold Valves
- In Line Check Valve
- Proportional Relief Valves
- Instrument Ball Valves
- Mono Flange Valves
- Integral Block & Bleed Valves
- Bleed & Purge Valves
- Thermowells
- Pressure gauge Accessories

Fittings

- Tube Fittings
- Pipe Fittings
- High Pressure- Pipe Fittings
- Hydraulic Fittings
(DIN 2353, JIC Fittings, ORFS Fittings)

Forged Steel Valves

- Forged Steel Globe Valves (Cryogenic Available)
- Forged Steel Gate Valves (Cryogenic Available)
- Forged Steel Lift check Valves
- Forged Steel Ball Valves (Cryogenic Available)