



Decide with Confidence
DUNS NO. : 86-917-7745



- Sizes: 3" to 6"
- Pressure Ratings: 6,000 PSI
- End connections:- NPT,
- Stainless Steel (316L, 316, 304, 304L),
Carbon Steel,

CONDENSATE POTS

DRIP POT

CONDENSATE POT / SEAL POT

CONDENSATE POTS are used to catch and hold condensate and foreign material. This helps keep manifold orifices clean and free of foreign material. They are located upstream of the instrument and have a bottom drain so that they may be cleaned. The condensate pots are available in a range of materials.

Installation can be either vertical or horizontal lines between primary (Flow Meter) and the secondary (transmitter/ gauge) to act as a barrier to the line fluid permitting direct sensing of the flow conditions. Units should be mounted at the same level minimizing possible error that could arise due to unequal head of fluid in the connecting pressure lines.

Typical industry applications include: refineries, Power Plants, Chemical and Petrochemical, Steel Plants and other process industries.

SEAL POTS (sometimes called condensate pots) are used to allow a liquid seal between the instrument and flowing gases such as steam. Their function is to keep the liquid level constant in the impulse tubes. For example, in boiler liquid level applications the high pressure (HP) side of a differential pressure transmitter is connected to the vapor space on top of the steam drum. Steam condenses in the chamber or seal pot and fills the impulse line with condensate. The seal pot is located to allow the condensate to drain back to the source thus keeping the liquid level constant.

FEATURES :-

- Use as liquid or condensate traps, seal pots, vapor chambers and knockout pots.
- All connectors are furnished with plastic plugs.
- Chambers are made from seamless pipe and weld caps. All pipe connections are 3000 # half-couplings mounted on 90° angle. Extra connections can be furnished upon customer request.
- All welding as per ASME SEC.IX.
- All butt weld joints will be 100% radiographed and fillet weld will be D.P. tested.
- All condensate pot will be hot dep galvanised.
- All threads will be protected with dead plugs/plastic caps.

TECHNICAL SPECIFICATIONS

- Standard size: Pipe size 2", 3", 4", 6" and larger size upon request.
- Standard length: Pipe length 8", 10", 12", and larger length upon request.
- Working pressure: 6000 PSIG(41.34 MPa).
- Standard Material of construction: 316SS, 321SS, 304SS, C.S., ASTM A106 Gr B.
- Optional Sour Gas service valves are available, confirming to NACE Std. MR-01-75.
- Pipe Schedule: 40, 80, 160, seamless pipe.
- Chamber as per ISA RP3.
- NPT as per ANSI B2.1 taper pipe thread 1/2" furnished.
- Socketweld as per ANSI B16.11
- Butt weld as per ANSI B16.9
- All chamber are 100% factory tested prior to shipment.

TESTING

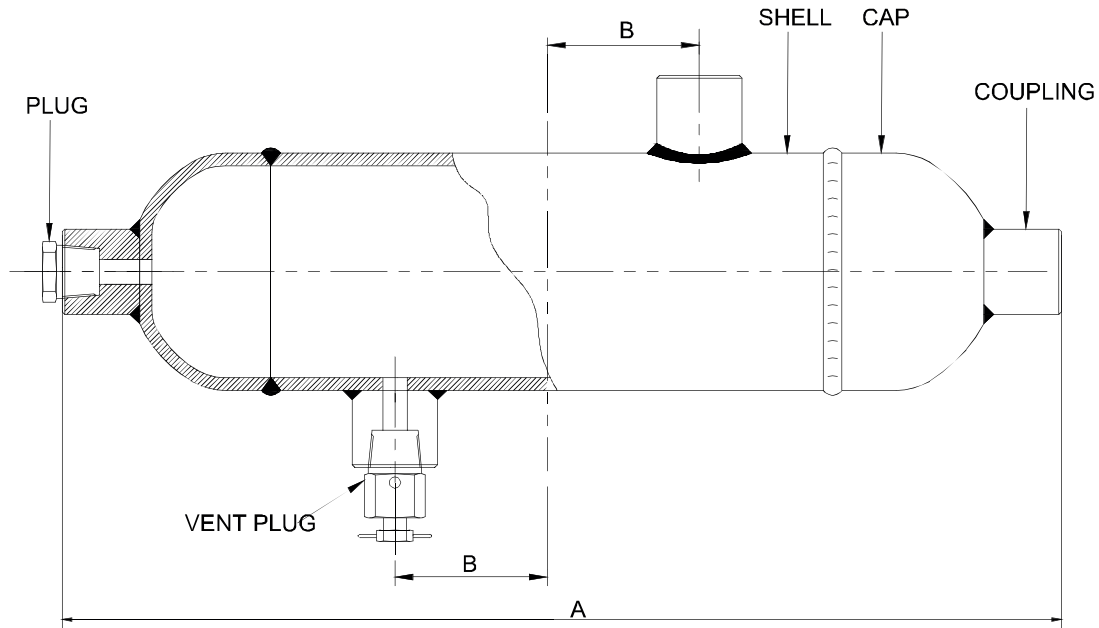
- Hydrostatic shell test is performed at 1.5 times the working pressure.

Ordering Information

Series	Sch.	Dimension - A	Dimension - B	Material	Class	Connection Type	Specific
CDP-5	80	265	36	316 SS	6	N	
CDP-5203 2" & 3 Couplings	40 Sch.40	See Table - B	See Table - B	316 SS	6 600 #	N NPT	
CDP-5204 2" & 4 Couplings	80 Sch.80			304 SS	9 900 #	B BSP	
CDP-5303 3" & 3 Couplings	160 Sch.160			321 SS	15 1500#	P BSPT	
CDP-5304 3" & 4 Couplings				C.S.	25 2500#	S Socket Weld	
CDP-5403 4" & 3 Couplings							
CDP-5404 4" & 4 Couplings							
CDP-5603 6" & 3 Couplings							
CDP-5604 6" & 4 Couplings							

These are the standard ordering number, PMT will provide the final ordering number based on the customer's specification.

TECHNICAL DETAIL



Notes:

- All connections are 1/2"(15) size and can either be threaded or provided with socket weld ends.
- Threded connection(NPT): As per ANSI B 2.1
- Threded connection(BSP): As per BS 2779
- Socket welding ends: As per ANSI B 16.11

TABLE - A

Material	Shell	Caps
C.S.	A106	A105
304 SS	A312 TP304	A182 F304
316 SS	A312 TP316	A182 F316
321 SS	A312 TP316	A182 F321
A.S.	A335 TP22/11	A182 F22/F11

TEST PRESSURE (PSI)

Size	SCH40	SCH80	SCH160
3"	1351	2204	3911
4"	1280	2133	3697
6"	1138	1778	2986

TABLE - B

Size	Schedule	Dimension 1		Dimension 2		Dimension 3		*Customer Requirement	
		A	B	A	B	A	B	A	B
3"(80)	40	265	36	356	51	356	57		
	80	265	36	356	51	356	57		
	160	265	36	356	51	356	57		
4"(100)	40	265	25	356	51	356	57		
	80	265	25	356	51	356	57		
	160			356	51	356	57		
6"(150)	40			356	25	356	57		
	80			356	25	356	57		
	160			356	25	356	57		



- Ordering number will be provided after the dimensions A & B are specified by the customer.



DS-LOK

INSTRUMENTATION VALVES AND FITTINGS



Valves

- Needle Valves
- Manifold Valves
- In Line Check Valve
- Proportional Relief Valves
- Instrument Ball Valves
- Mono Flange Valves
- Integral Block & Bleed Valves
- Bleed & Purge Valves
- Thermowells
- Pressure gauge Accessories

Fittings

- Tube Fittings
- Pipe Fittings
- High Pressure- Pipe Fittings
- Hydraulic Fittings
(DIN 2353, JIC Fittings, ORFS Fittings)

Forged Steel Valves

- Forged Steel Globe Valves (Cryogenic Available)
- Forged Steel Gate Valves (Cryogenic Available)
- Forged Steel Lift check Valves
- Forged Steel Ball Valves (Cryogenic Available)